



## Easy Chess Puzzle # 0120

By

G Bud Games  
<https://gbud.in>

January 28, 2022

## Contents

|   |          |
|---|----------|
| <b>Easy Chess puzzle # 0120 - Pin and capture opponent's rook</b> | <b>3</b> |
| Easy chess puzzle 0120 . . . . .                                  | 3        |
| Solution to easy chess puzzle 0120 . . . . .                      | 4        |
| Solution 1 . . . . .  | 4        |
| Right moves for the solution to the easy chess puzzle 0120        | 7        |
| Explanation for the moves . . . . .                               | 7        |
| Categories of easy chess puzzle 0120 . . . . .                    | 7        |
| easy chess puzzle 0120 chart . . . . .                            | 8        |
| How to view the solution to easy chess puzzle 0120 . . . . .      | 10       |
| How to get help for moves in the easy chess puzzle 0120 . . . . . | 11       |
| Play chess for free . . . . .                                     | 12       |

## List of Figures

|    |  |    |  |
|----|--|----|--|
| 1  | Solve this easy chess puzzle 0120. Pin and capture opponent's rook @ <a href="https://gbud.in/g31b7w1">https://gbud.in/g31b7w1</a> . . . . . | 3  |  |
| 2  | Solve this chess puzzle online with solution @ <a href="https://gbud.in/g31b7w1">https://gbud.in/g31b7w1</a> . . . . .                       | 3  |  |
| 3  | Initial board position of easy chess puzzle 0120 . . . . .   | 4  |  |
| 4  | Rxb5 . . . . .   | 5  |  |
| 5  | Ba4 . . . . .  | 5  |  |
| 6  | Kf8 . . . . .  | 6  |  |
| 7  | Bxb5 . . . . .   | 6  |  |
| 8  | easy chess puzzle 120 chart 1 . . . . .  | 8  |  |
| 9  | easy chess puzzle 120 chart 2 . . . . .  | 9  |  |
| 10 | easy chess puzzle 120 chart 3 . . . . .  | 9  |  |
| 11 | easy chess puzzle 120 chart 4 . . . . .  | 10 |  |
| 12 | Click the solution button to view solutions @ <a href="https://gbud.in/g31b7w1">https://gbud.in/g31b7w1</a> . . . . .                        | 10 |  |
| 13 | Click the help button to get help on next move @ <a href="https://gbud.in/g31b7w1">https://gbud.in/g31b7w1</a> . . . . .                     | 11 |  |
| 14 | Solve more easy puzzles @ <a href="https://gbud.in/chsezpz">https://gbud.in/chsezpz</a> . . . . .  | 11 |  |
| 15 | Solve other puzzles @ <a href="https://gbud.in/chsgppz">https://gbud.in/chsgppz</a> . . . . .  | 11 |  |
| 16 | Play chess online for free. Solve puzzles and play with friends  | 12 |  |
| 17 | Solve this puzzle online by scanning this QR code or go to the link below . . . . .  | 13 |  |

## Easy Chess puzzle # 0120 - Pin and capture opponent's rook

Solve this easy chess puzzle and improve your chess games through improvement of your chess strategies and chess tactics.

Puzzle No : 0120

Difficulty level : Easy

Description : Pin and capture opponent's rook

Next Move : White

Player level : Beginner

Short URL for puzzle : <https://gbud.in/g31b7w1>

### Easy chess puzzle 0120

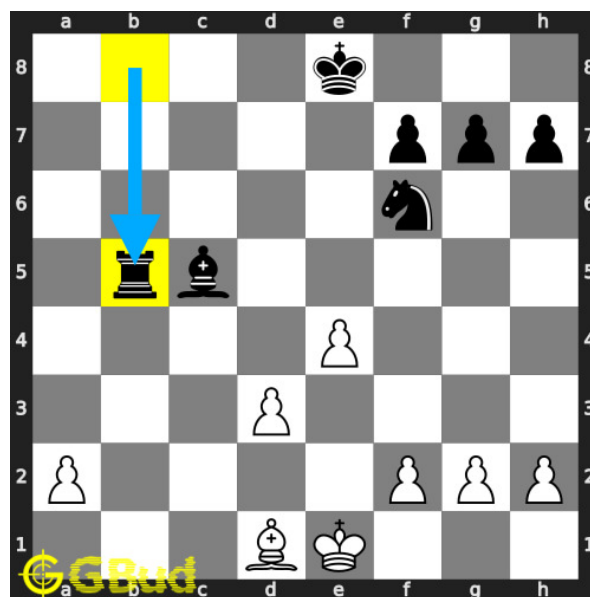


Figure 1: Solve this easy chess puzzle 0120. Pin and capture opponent's rook @ <https://gbud.in/g31b7w1>



Figure 2: Solve this chess puzzle online with solution @ <https://gbud.in/g31b7w1>

Dont forget to check out [chess puzzles](#), [easy chess puzzles](#), [medium chess puzzles](#), [hard chess puzzles](#) and [chess puzzles collections](#) .

## Solution to easy chess puzzle 0120

At this puzzle, next [move](#) is by [White](#). The objective of the puzzle is to pin and capture opponent's rook.

See the interactive solution at the [puzzle page](#)

### Solution 1

**Initial board position** This is the initial board position of easy chess puzzle 0120.

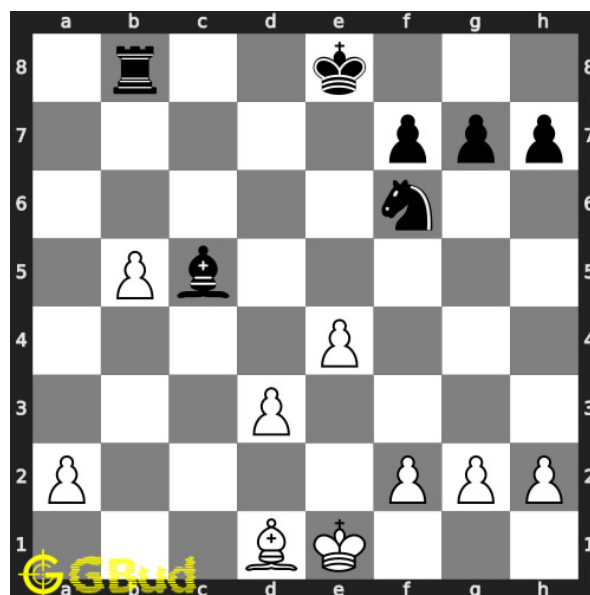


Figure 3: Initial board position of easy chess puzzle 0120

**Move 1** Move by black

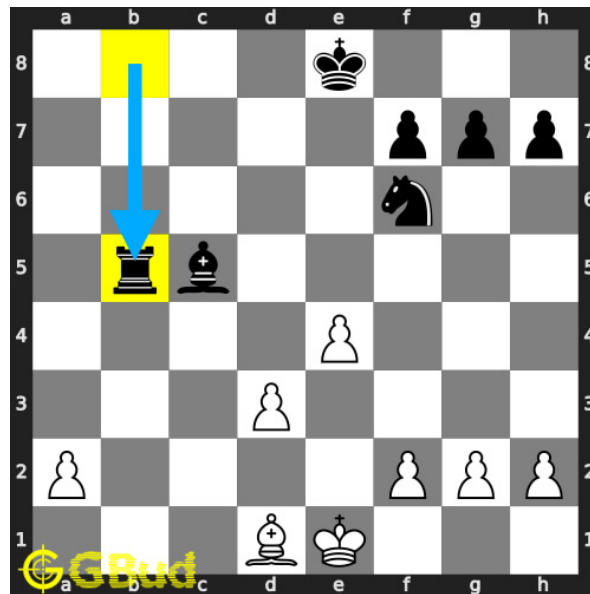


Figure 4: Rxb5

opponent's **rook** captures your hanging **pawn**.

**Move 2** Move by white

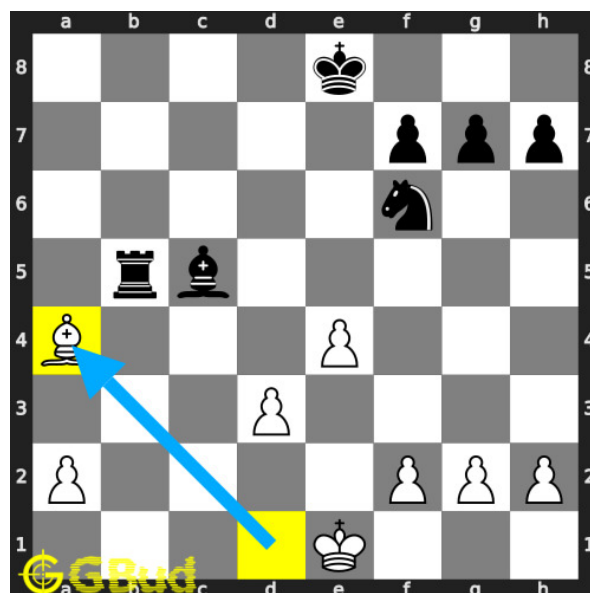


Figure 5: Ba4

your **bishop** pins the opponent's **rook** to their **king**. opponent's **rook** can't **move** since the movement exposes it's **king** to a **check**.

**Move 3** Move by black

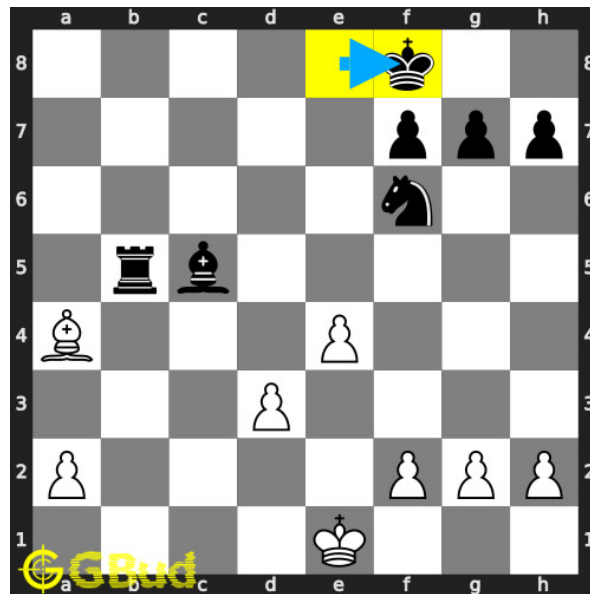


Figure 6: Kf8

opponent's king move to f8 to un-pin the rook.

**Move 4** Move by white

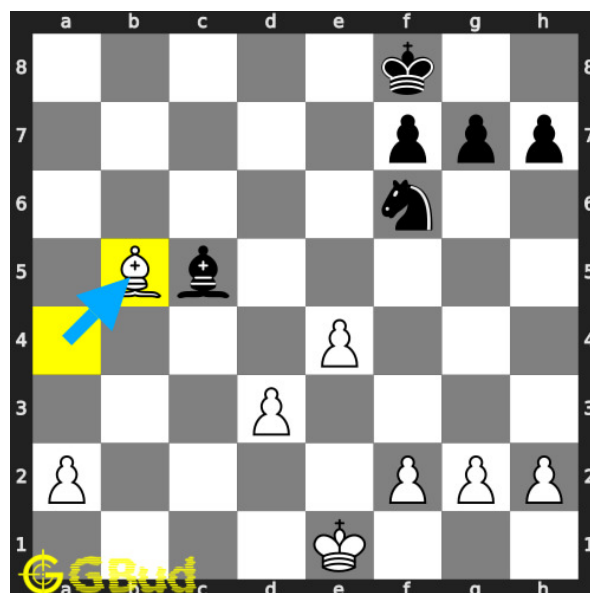


Figure 7: Bxb5

your bishop captures opponents hanging rook. this is how you can pin and capture opponent's rook.

## Right moves for the solution to the easy chess puzzle 0120

Based on the objective of the puzzle, you have to make the right moves. Following are the right moves

1. Ba4, Bxb5

## Explanation for the moves

1. Rxb5 - Opponent's rook captures your hanging pawn.
2. Ba4 - Your bishop pins the opponent's rook to their king. Opponent's rook can't move since the movement exposes it's king to a check.
3. Kf8 - Opponent's king move to f8 to un-pin the rook.
4. Bxb5 - Your bishop captures opponents hanging rook. This is how you can pin and capture opponent's rook.
5. For right move - You gained a rook through a pin. Good job
6. For wrong move - You should have pinned the rook to their king to capture it. Dont give up yet

## Categories of easy chess puzzle 0120

This easy chess puzzle falls in these categories.

1. [Easy chess puzzles](#)
2. [Gain puzzles in chess](#)
3. [Strategy puzzles in chess](#)
4. [Pin puzzles in chess](#)
5. [Bishop puzzles in chess](#)

## easy chess puzzle 0120 chart



Figure 8: easy chess puzzle 120 chart 1





Figure 9: easy chess puzzle 120 chart 2



Figure 10: easy chess puzzle 120 chart 3

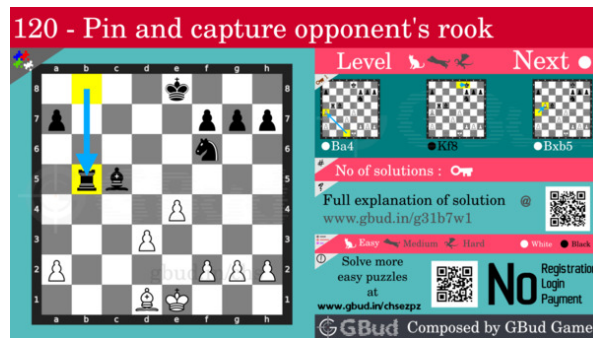


Figure 11: easy chess puzzle 120 chart 4

## How to view the solution to easy chess puzzle 0120

To view the [solution to this puzzle](https://gbud.in/g31b7w1), follow the steps given below

1. Go to the [puzzle page](https://gbud.in/g31b7w1)
2. Click the solution button (Key as shown [below](https://gbud.in/g31b7w1)) to view the solution



Figure 12: Click the solution button to view solutions @ <https://gbud.in/g31b7w1>

## How to get help for moves in the easy chess puzzle 0120

To get help or the possible next moves in the puzzle, , follow the steps given below

1. Go to the [puzzle page](#)
2. Click the help button (exclamation mark as shown [below](#)) to get help or suggestion on next possible [move](#)



Figure 13: Click the help button to get help on next move @ <https://gbud.in/g31b7w1>



Figure 14: Solve more easy puzzles @ <https://gbud.in/chsezpz>



Figure 15: Solve other puzzles @ <https://gbud.in/chsgppz>

## Play chess for free

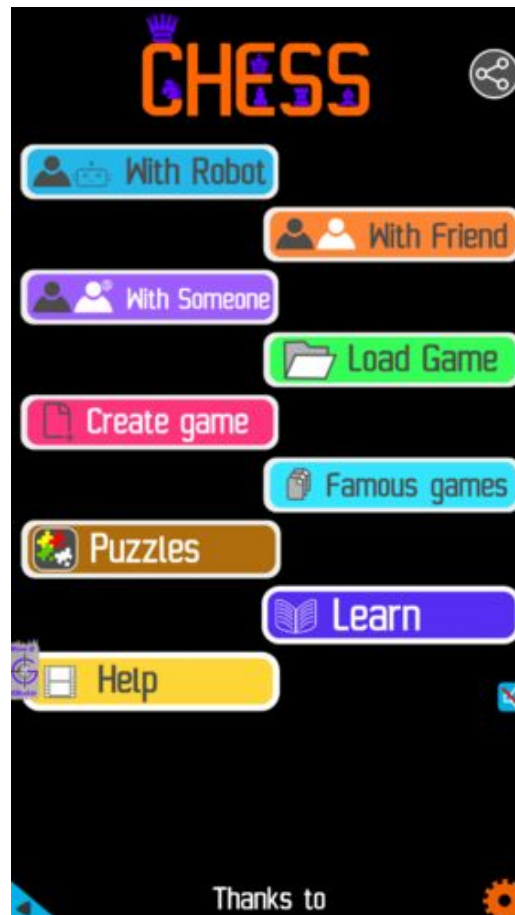


Figure 16: Play chess online for free. Solve puzzles and play with friends

Play chess for free at <https://gbud.in/chs>

We present you a platform to play chess online with friends for free. No need to install any app. You can play chess for free without registration or login.

Simple. You can do several chess related activities.

1. [solve chess puzzles](#)
2. [learn about chess](#)
3. [play chess with computer](#)
4. [play chess with friend](#)
5. [create your own chess games](#)

6. [fen viewer](#)
7. [fen editor](#)
8. [fen generator](#)
9. [pgn viewer](#)
10. [chess board editor](#)
11. [view famous chess games.](#)



Figure 17: Solve this puzzle online by scanning this QR code or go to the link below

<https://gbud.in/g31b7w1>

Read the latest article on Easy Chess puzzle # 0120 - Pin and capture opponent's rook by scanning this QR code or click the link

Previous article : « [Easy Chess puzzle # 0119 - Mate in 1 move](#)

Next article : [Easy chess puzzles](#) »

[Back to top](#)

[Contact Us](#)